

DIABETES CARE

MINNESOTA QUALITY METRICS

University of Mary, Division of Nursing
NUR 590 Principles of Informatics in Healthcare Professions
Prof. Mindy Detling, DNP
Isis Reha, BSN, RN



TODAY'S AGENDA

- Method for calculation of metrics.
- Standards of diabetic care in MN.
- MN statewide rate.
- Comparison of measures.
- Costs associated with measures.





ABOUT

<https://mncm.org/mnhealthscores/>

Mission: MN Community Measurement (MNCM) empowers health care decision-makers with meaningful data to drive improvement.

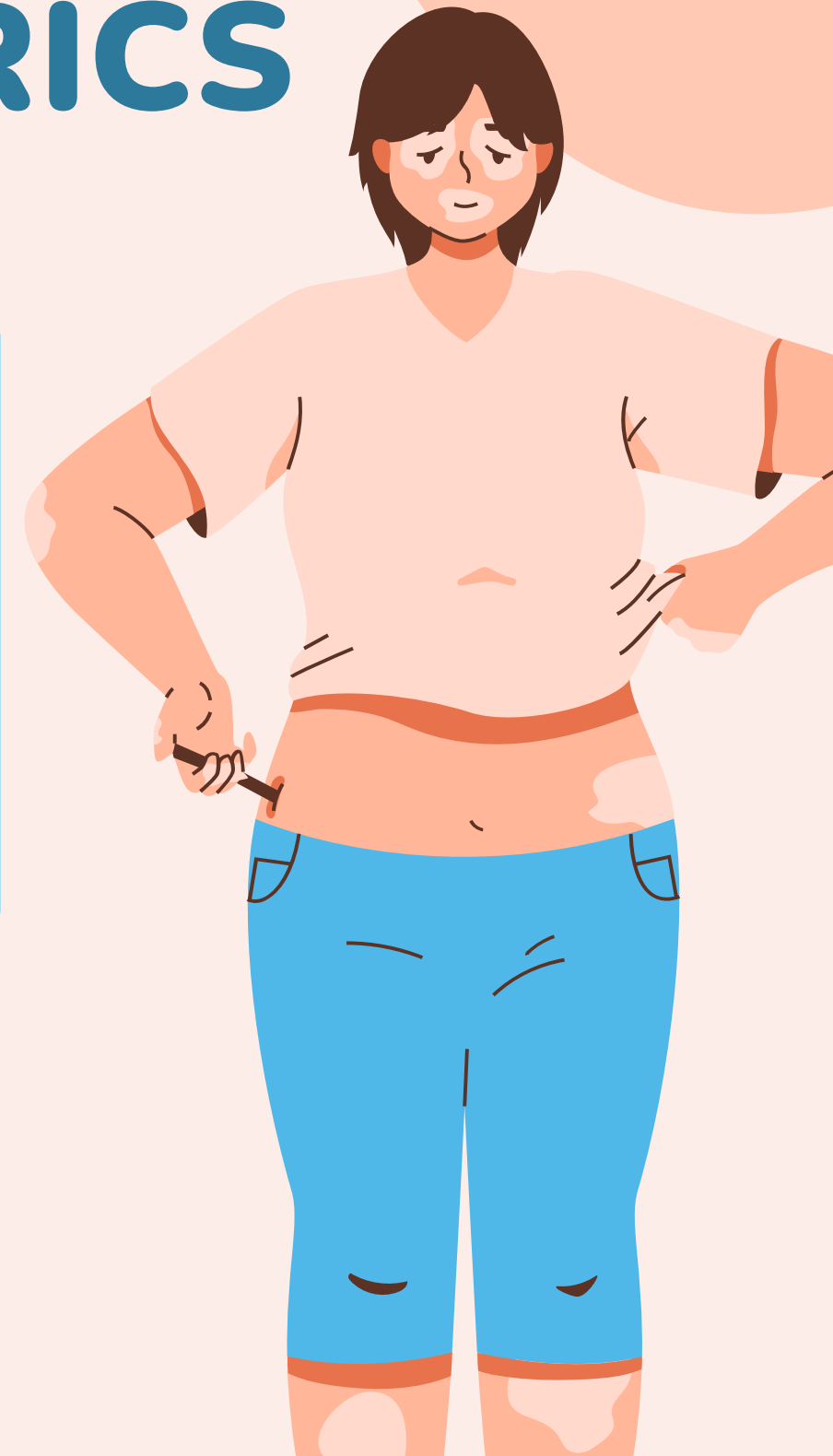
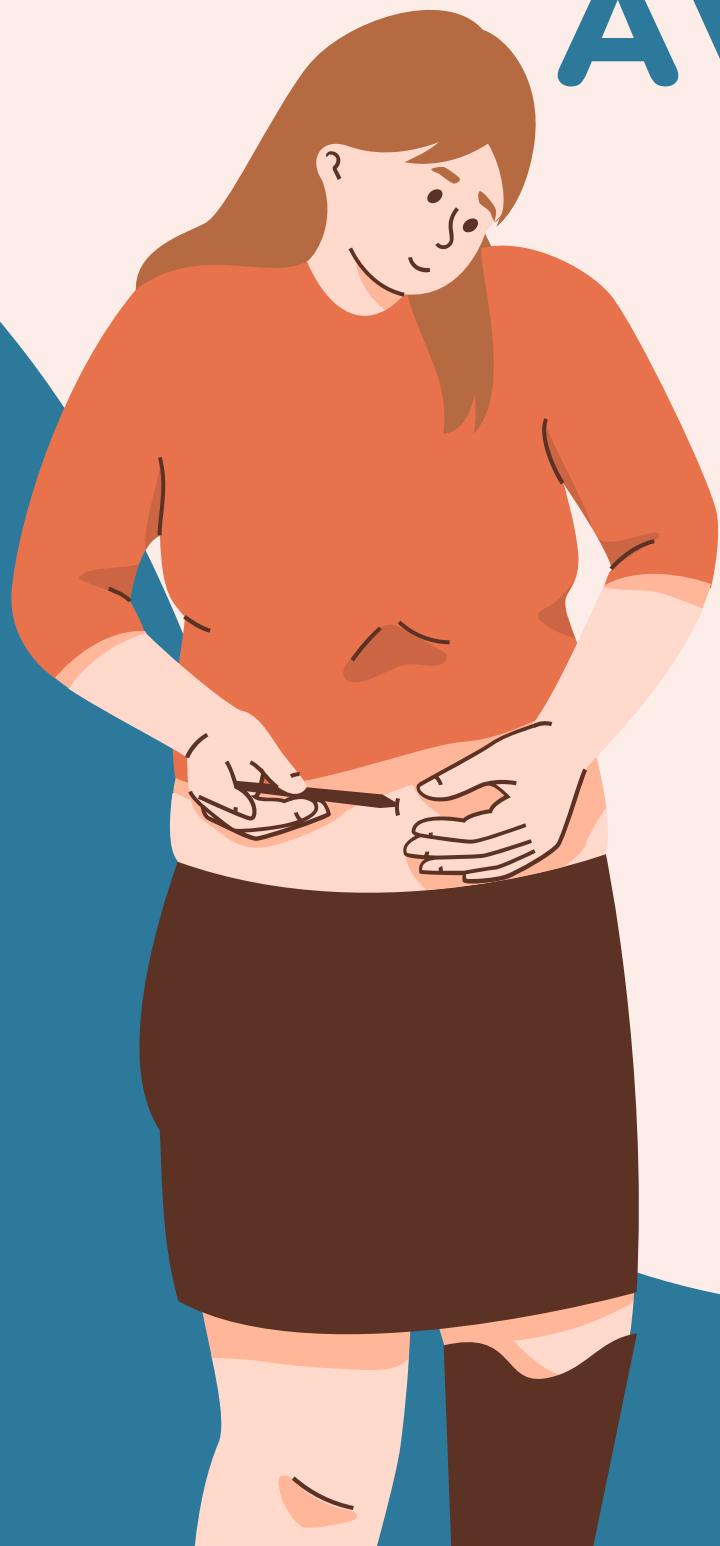
Vision: MNCM collaborates with organizations and individuals to advance health care quality and affordability by providing unbiased, trustworthy information on clinical quality and cost measures.

(Minnesota Community Measurement, n.d.).

AVAILABLE QUALITY METRICS

- Colorectal screening;
- Optimal vascular care;
- Optimal asthma control in adults and children;
- Depression care for adults and children;

(MNCM, n.d.)



**OPTIMAL DIABETES CARE
DEFINITION:**
PERCENTAGE OF PATIENTS
BETWEEN 18 - 75 YEARS
WHO RECEIVED A
DIAGNOSIS OF TYPE I OR II,
AND WHO WERE ABLE TO
MAINTAIN CERTAIN
STANDARDS THROUGHOUT
THEIR CARE.

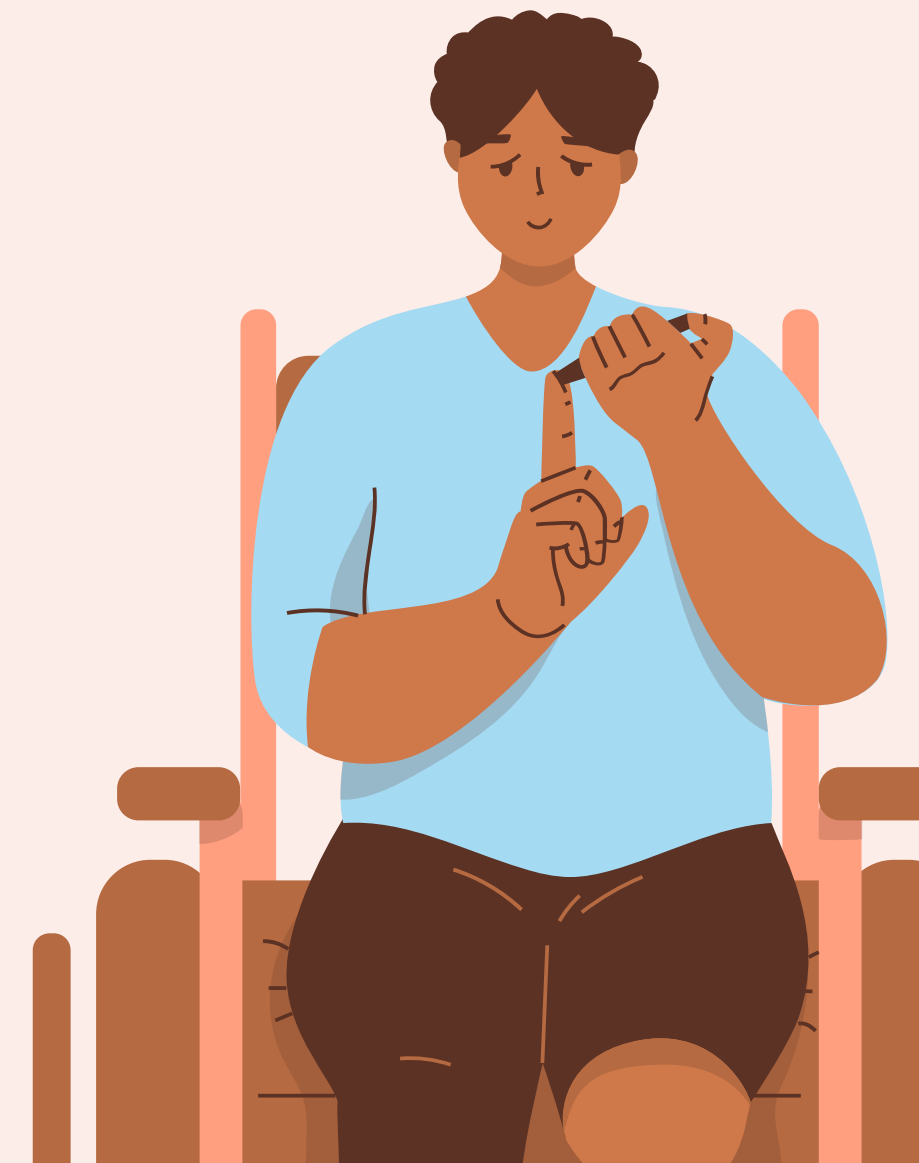


(MNCCM, n.d.)

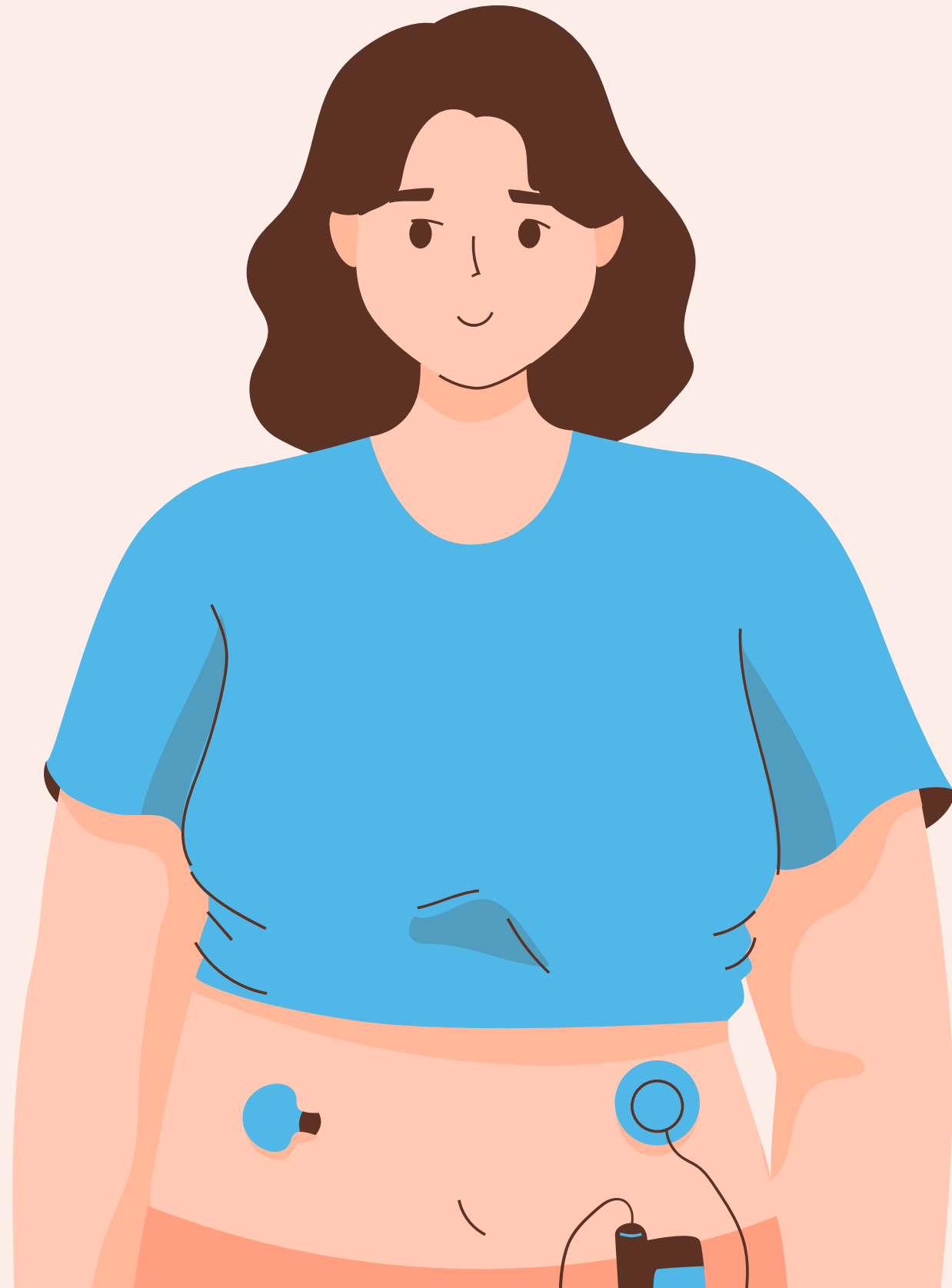
Diagnosed patients had to achieve all the standards listed.

- HbA1c of 8 or less;
- BP less than 140/90;
- On a statin medication (if indicated);
- Tobacco free;
- On daily Aspirin if ischemic vascular disease is present;

(MNCM, n.d.)



(National Committee for Quality Assurance , n.d.)



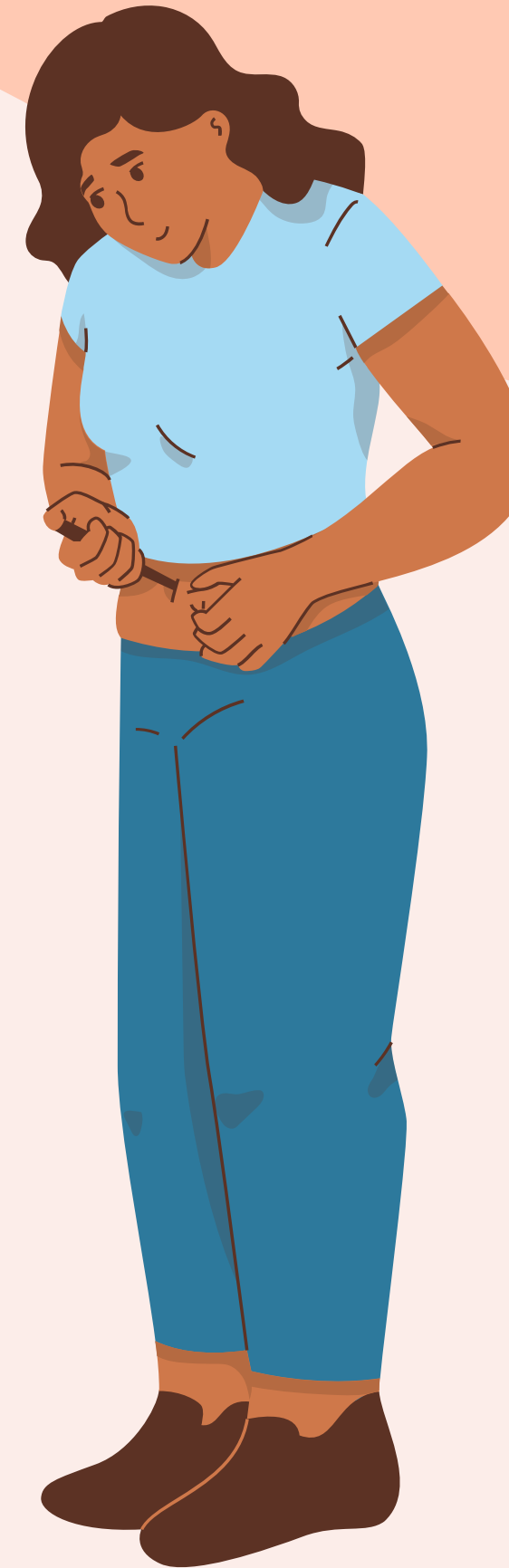
NATIONAL GUIDELINES:
THE NATIONAL STANDARD
FOR OPTIMAL DIABETES CARE
IS PRIMARILY DEFINED BY THE
NATIONAL COMMITTEE FOR
QUALITY ASSURANCE (NCQA)
THROUGH ITS HEALTHCARE
EFFECTIVENESS DATA AND
INFORMATION SET (HEDIS)
MEASURES.



The key quality metrics for adults aged 18–75 with diabetes (types 1 and 2) include:

- Hemoglobin A1c (HbA1c) Testing: Regular monitoring;
- HbA1c Control: percentage of patients with HbA1c levels below 8.0%.
- HbA1c Poor Control: patients with HbA1c levels above 9.0%.

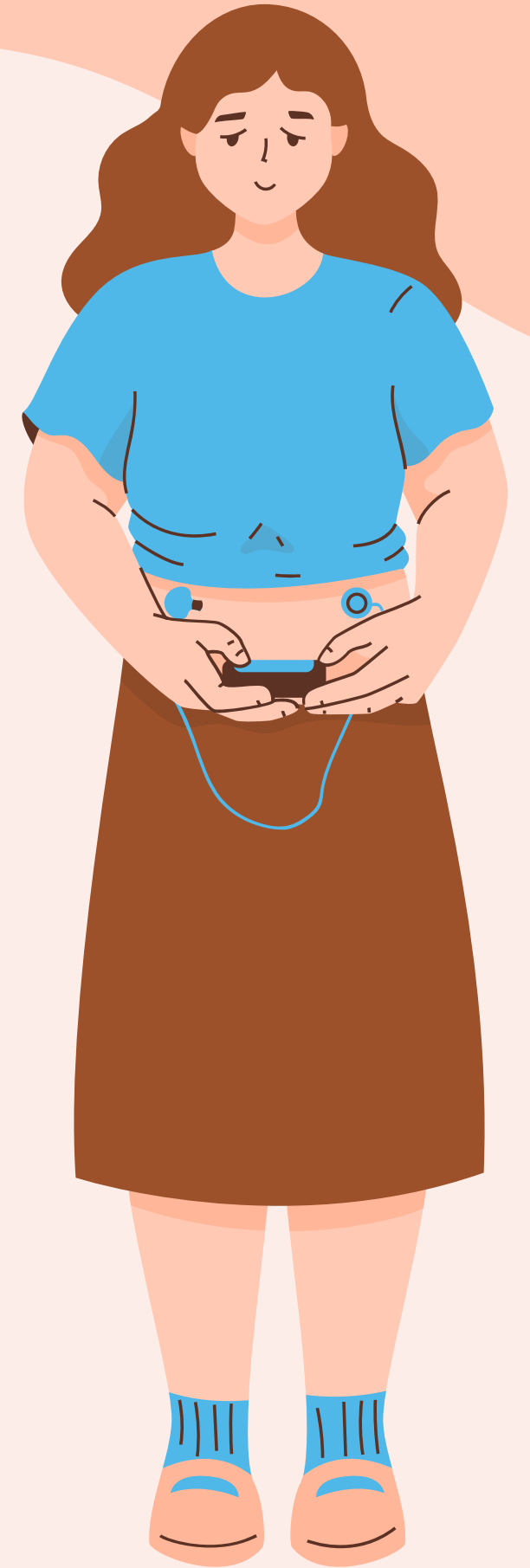
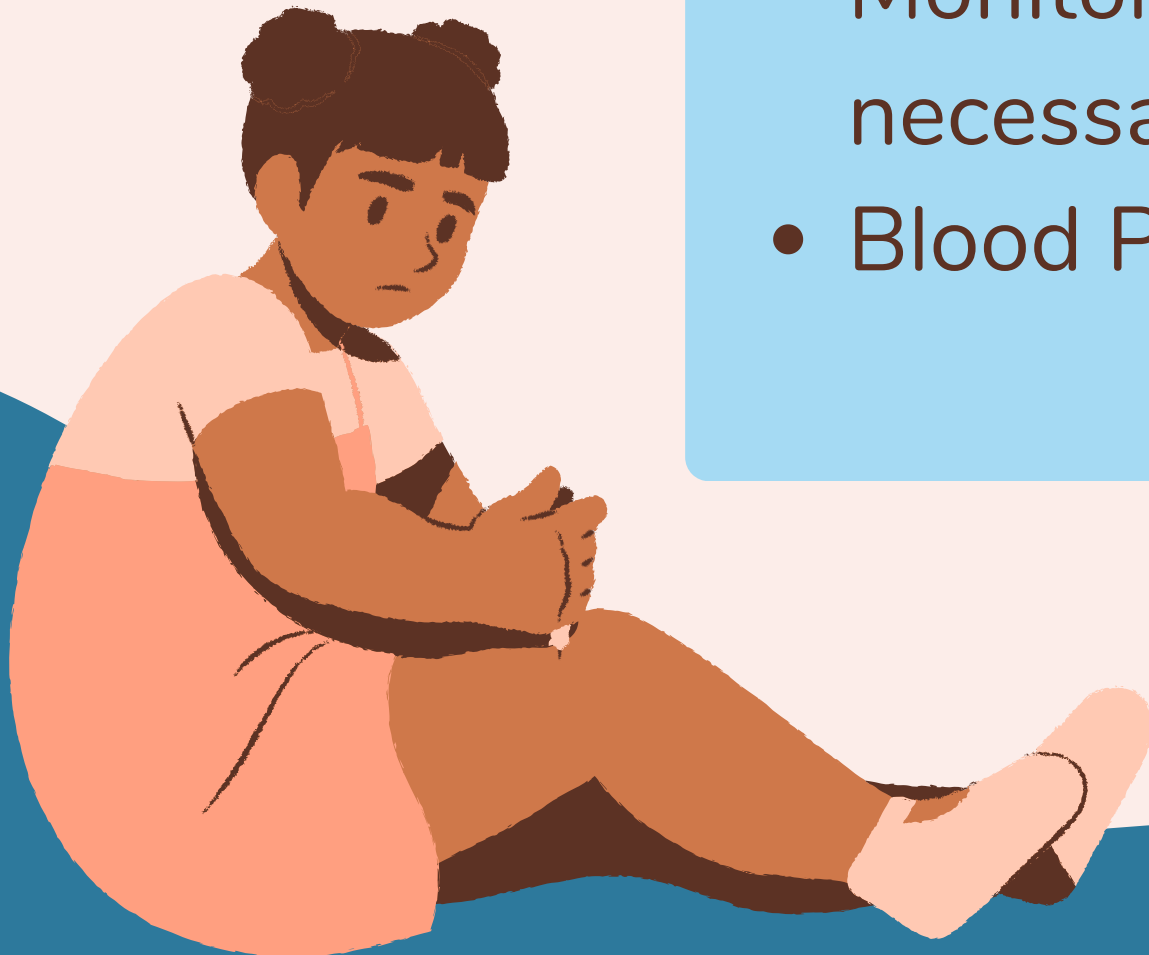
(NCQA, n.d.)



National metrics (cont.)

- Eye Exam: Ensuring patients receive a retinal examination to detect diabetic retinopathy.
- Medical Attention for Nephropathy: Monitoring kidney health and providing necessary medical attention.
- Blood Pressure Control: BP less than 140/90.

(NCQA, n.d.)



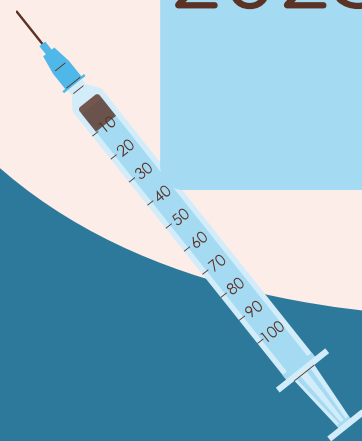
QUALITY METRICS COMPARISON

While MN included a tobacco-free measure, and NCQA did not, the national metrics were more comprehensive, as they emphasized vision and kidney care.



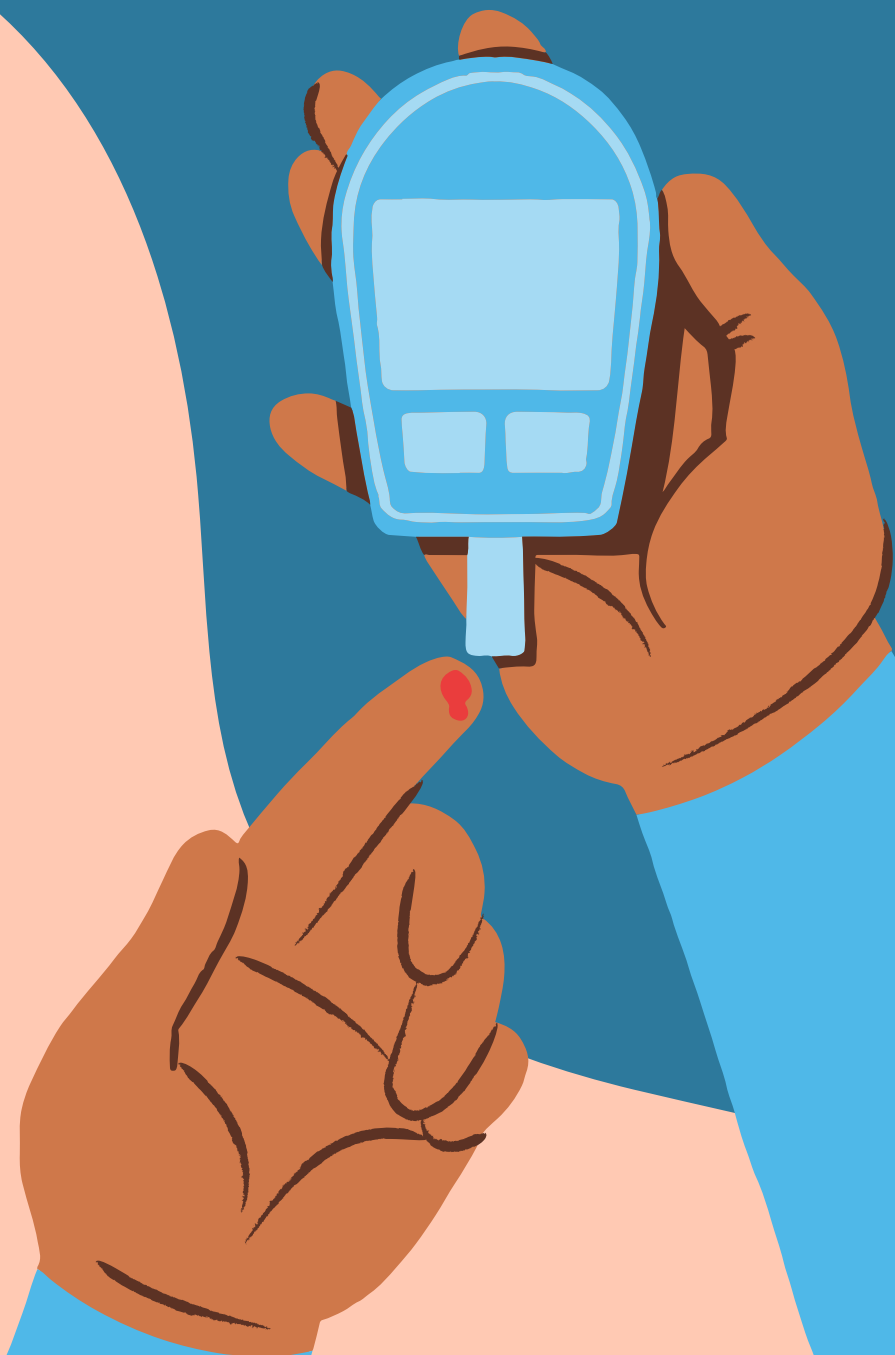
THE IMPORTANCE OF VISION AND KIDNEY CARE FOR DIABETIC PATIENTS:

According to the American Diabetes Association, “Diabetes management must include vision and kidney care because diabetic retinopathy and nephropathy are common complications that can lead to blindness and kidney failure, respectively. Early detection and treatment are crucial to prevent or delay these outcomes.” (ADA, 2023).



MINNESOTA STATEWIDE RATE

- For 2023 the rate was 46.3%
- Denominator was 342,704
- Expected rate is 46%
(MNCM, n.d.).



OVERALL COSTS CALCULATION



(MNCCM, n.d.)





OVERALL COSTS

High Performer: Mayo Clinic

- Quality Measures: Recognized as a top-performing medical group, Mayo Clinic consistently achieves better-than-average performance on multiple quality measures.
- 2021 data: cost index 1.93, utilization index 1.5.
- Total Overall Cost: 2,895. The Rochester area, where Mayo Clinic is located, has a total cost of care 37.4% above the state average, primarily due to higher prices.
- Has an above average health score of 63%.

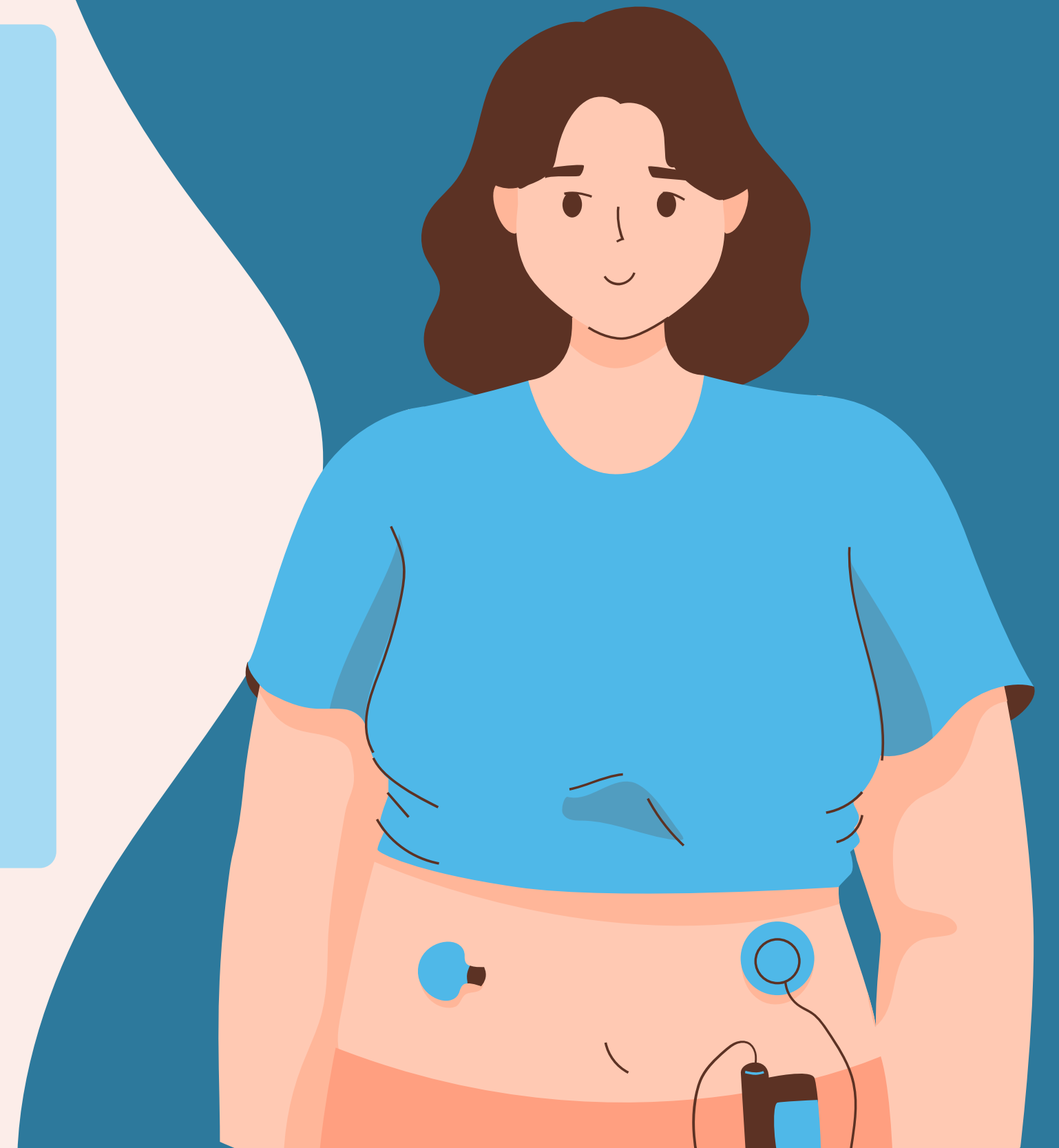
(MNCM, n.d.)

OVERALL COSTS (CONT.)

Middle Performer: HealthPartners Clinics

- Quality Measures: recognized as a top-performing medical group, achieving better-than-average performance on multiple quality measures.
- 2021 data: 0.9 cost index and 0.93 utilization index.
- Total Overall Cost: 837
- Has an above average score of 56.1%.

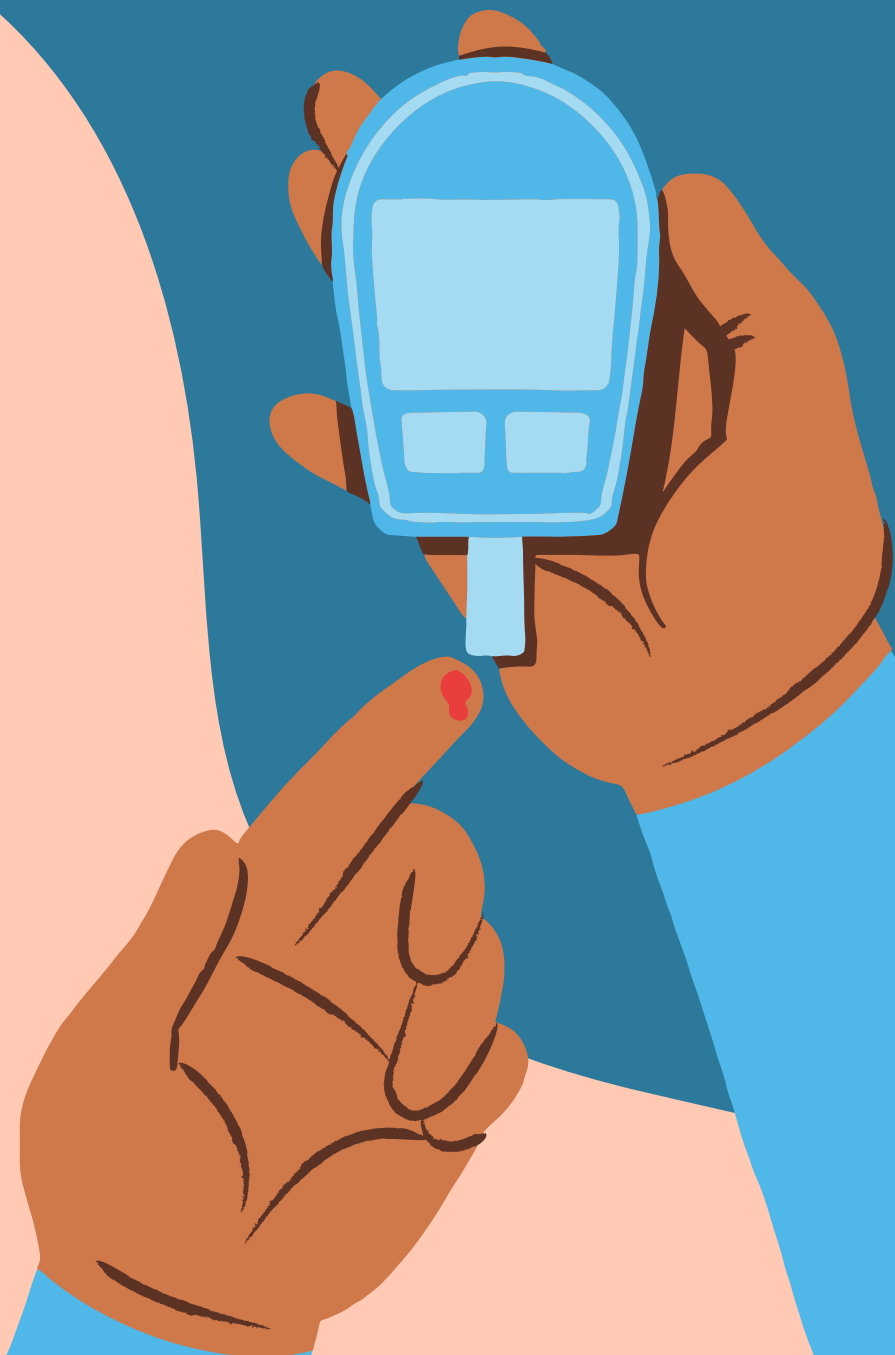
(MNCM, n.d.)



OVERALL COSTS (CONT.)

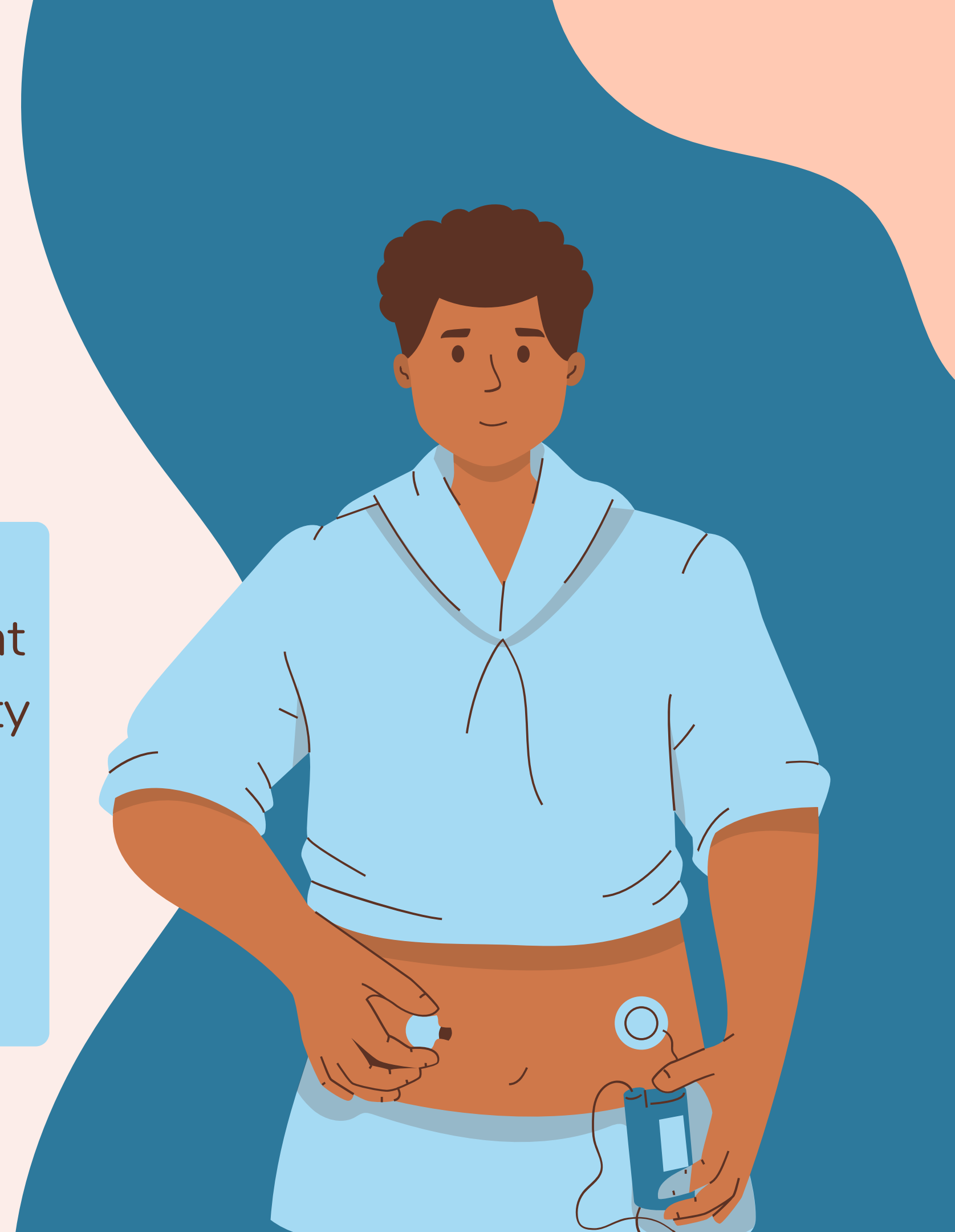
Low performer: Community University Health Care Center;

- 2021 data: 0.78 cost index and 0.86 utilization index;
- Total cost of \$670
- Has a below expected score of 26.8%.



IMPORTANCE OF QUALITY METRICS

Participating in health care quality measurement programs enhances patient outcomes and safety by promoting adherence to evidence-based practices. (Institute of Medicine, 2001).





THANK YOU!

Thank you so much for watching this presentation! Do you have any questions, comments, or suggestions?

REFERENCES

American Diabetes Association Professional Practice Committee. (2024). 12. Retinopathy, Neuropathy, and Foot Care: Standards of Care in Diabetes—2024. *Diabetes Care*, 47(Suppl 1), S209–S220. <https://doi.org/10.2337/dc24-S012>.

Institute of Medicine. (2001). *Crossing the quality chasm: A new health system for the 21st century*. National Academies Press. <https://www.med.unc.edu/neurosurgery/wp-content/uploads/sites/460/2018/10/Crossing-the-Quality-Chasm.pdf>

Minnesota Community Measurement. (n.d.). MN HealthScores. <https://mncm.org/mnhealthscores/>

National Committee for Quality Assurance. (n.d.). Comprehensive Diabetes Care (CDC). <https://www.ncqa.org/hedis/measures/comprehensive-diabetes-care/>